

DOMESTIC VIOLENCE

IS COERCIVE, **CONTROLLING** CURRENT/EX **PARTNERS OR**
BEHAVIOR *between* **FAMILY MEMBERS**

and can include: physical, psychological, sexual, and financial abuse

VIOLENCE IS

**not
an**

OUTBURST

due to anger issues

Domestic Violence is

MOST

COMMON

AMONG WOMEN 18-24

VIOLENCE IS

a

CHOICE

an abuser makes

PENNSYLVANIA

ADVOCATES

ANSWER NEARLY

750

HOTLINE CALLS

a day



DOMESTIC VIOLENCE

ABUSERS ARE NOT ALWAYS ABUSIVE
MAKING IT HARDER FOR SURVIVORS TO LEAVE



of CHILDREN

in homes with
domestic violence
have witnessed the violence

PENNSYLVANIA

ADVOCATES

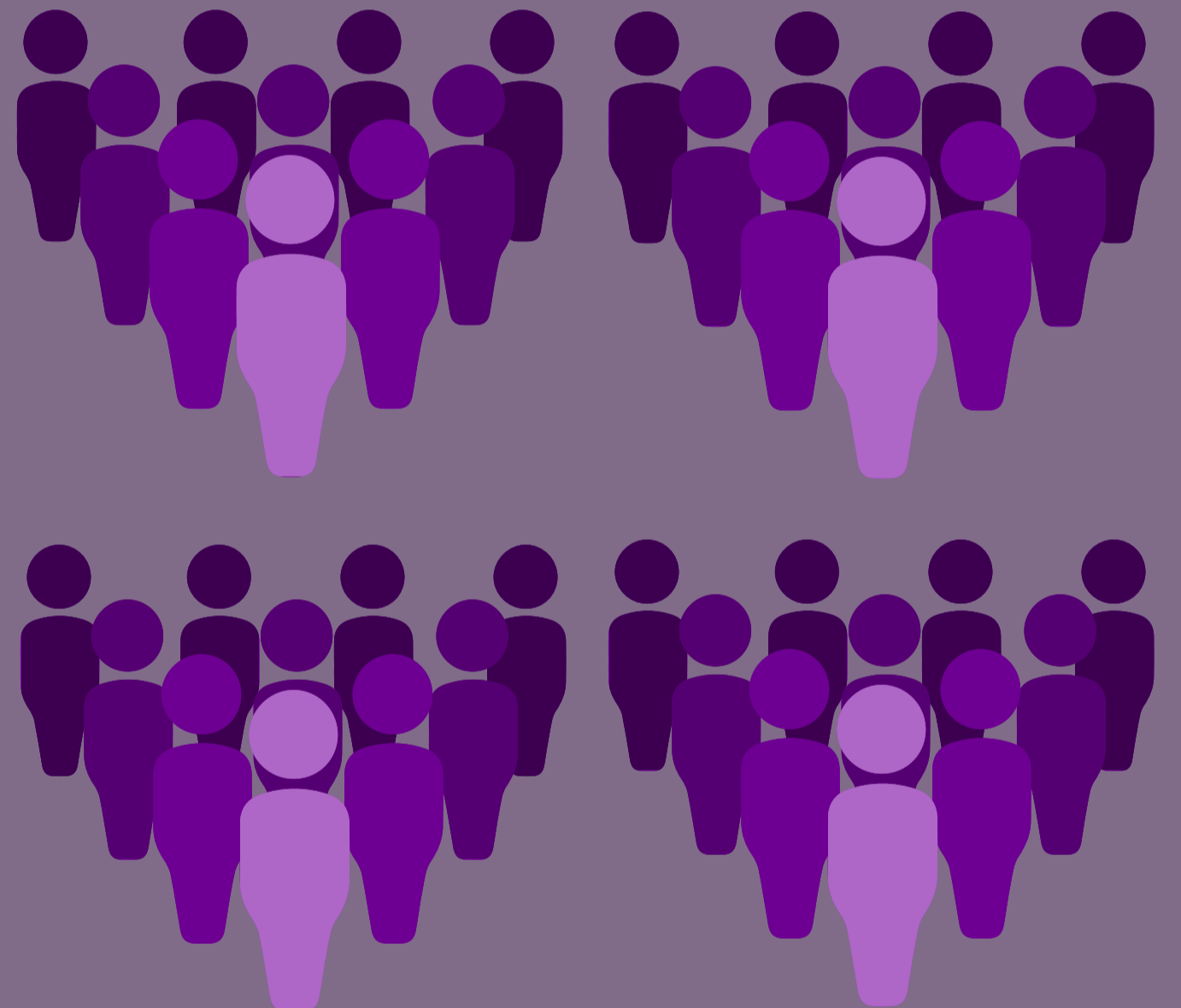
PROVIDE SERVICES

to nearly

2,500

SURVIVORS

daily



DOMESTIC VIOLENCE

COSTS MORE

THAN



8.3

BILLION PER YEAR

VOICe

Victim Outreach
Intervention Center